

The Viega logo is a square divided into two horizontal sections. The top section is black with the word "viega" in a yellow, lowercase, sans-serif font. The bottom section is a solid yellow color. The entire logo is enclosed in a thin white border.

**viega**

A close-up photograph of a vertical metal pipe joint. The pipe is highly reflective, showing a bright orange glow from a heat source. The background is dark and out of focus, showing some structural elements.

**SISTEMA PROGRESS**  
**Proyecto:**  
**REPARACIÓN EN VIVO**

A close-up photograph of a mechanical tool, possibly a pipe wrench or a similar device, with a red handle. The tool is positioned diagonally across the frame. The background is dark and out of focus, showing some structural elements.

**SISTEMA PROGRESS**  
**Proyecto:**  
**REPARACIÓN EN VIVO**



**Fuga en junta de  
conexión soldada**



**Pieza defectuosa  
es removida...**



**Sistema con agua  
en vivo...**





**Pieza ProPress es  
montada en la tubería**





**Aro de prensa es  
montado en la pieza**



**Pieza ProPress  
después de prensar...**



**Reparación  
terminada en solo  
minutos.**





The Viega logo consists of the word "viega" in a bold, lowercase, sans-serif font, colored yellow. It is positioned within a dark blue rectangular box. Below this box is a solid yellow rectangular bar. The entire logo is set against a black background.

**viega**

A close-up photograph of a Viega Propress pipe fitting. The fitting is made of polished copper and is shown in a vertical orientation. It is connected to a horizontal pipe. The background is dark and out of focus, showing some structural elements of a building.

**SISTEMA PROPRESS**

**Proyecto:  
HOTEL WESTIN  
PLAYA BONITA**







The Viega logo consists of the word "viega" in a bold, lowercase, sans-serif font, colored yellow. It is positioned within a black rectangular box. Below this box is a solid yellow rectangular bar. The entire logo is set against a black background.

**viega**

A close-up photograph of a Viega Propress pipe fitting. The fitting is made of polished metal and is shown in a vertical orientation. It is connected to a horizontal pipe. The background is dark and out of focus, showing some structural elements of a building.

**SISTEMA PROPRESS**  
**Proyecto:**  
**HOSPITAL GUAYAQUIL**

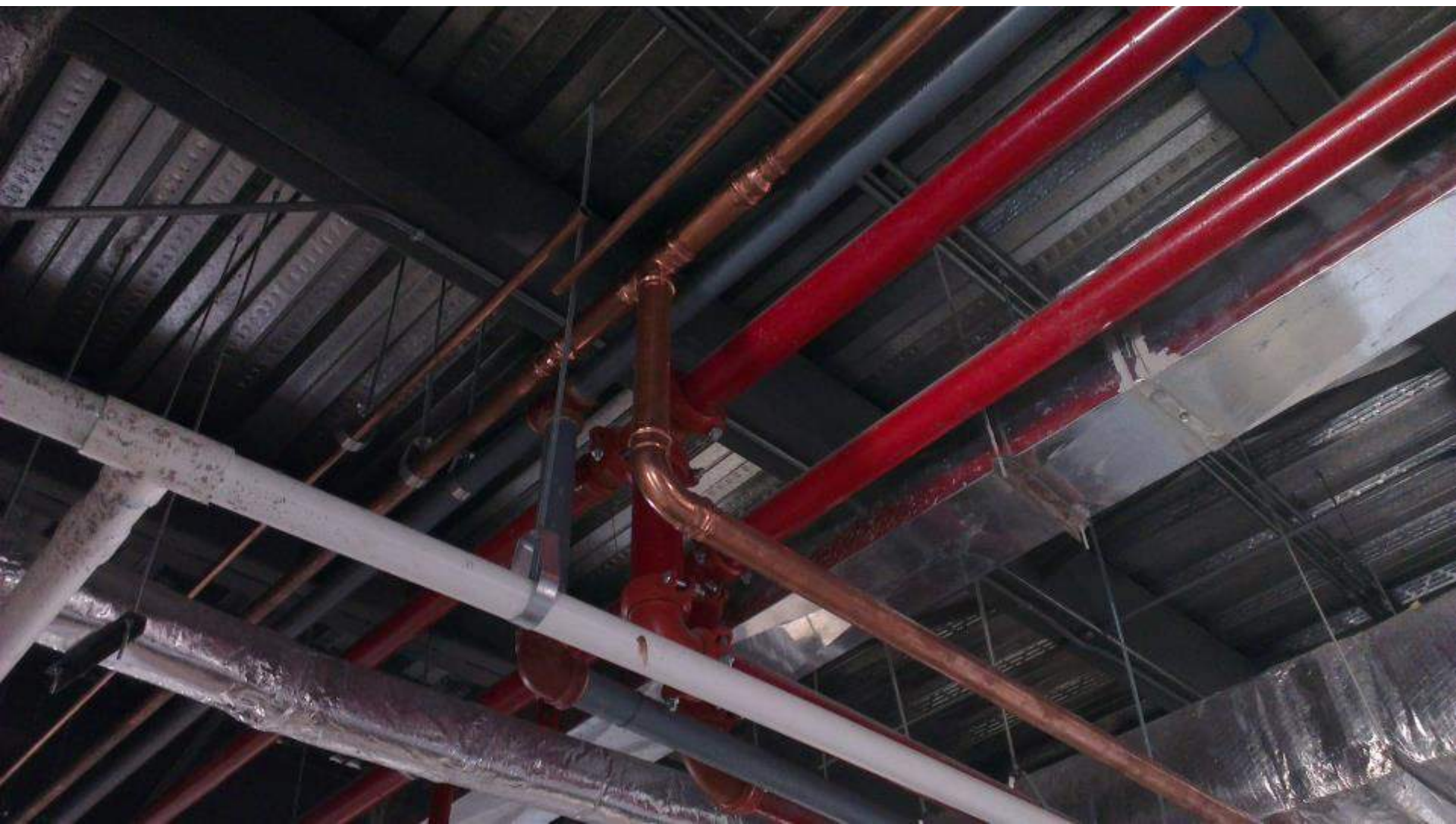


# Hospital de Guayaquil





# Hospital de Guayaquil





# Hospital de Guayaquil

